



# Thrive by Five Coordinating Council

---

Wednesday, November 20, 2019

The John A. Wilson Building

3:00- 5:00 pm

# Agenda

---

- 1) Welcome
- 2) Coordinating Council Purpose
- 3) Remarks: Deputy Mayor Wayne Turnage
- 4) Remarks: Deputy Mayor Paul Kihn
- 5) Membership Introductions
- 6) Landscape & Context Setting
- 7) Discussion of Member Priorities and Goals
- 8) Next Steps
- 9) Adjournment

# Thrive by Five Coordinating Council

---

The purpose of the Mayor's Thrive by Five Coordinating Council is to drive progress on initiatives that improve outcomes for mothers and infants and children from birth to age five (5) in the District.

# Thrive by Five Coordinating Council

---

## The Council shall:

### Track and report

Track and report on the progress and outcomes of District and community programs and initiatives focused on improving the outcomes of maternal and infant (perinatal) health and healthy child development from birth to age five (5).

### Programmatic and Policy Recommendations

Make recommendations to the Mayor, the Deputy Mayor for Health and Human Services, and the Deputy Mayor for Education regarding programs, policies, and initiatives to connect families and individuals to resources to support maternal and child (perinatal) health, behavioral health, and early education.

### Coordination and Streamlining

Make recommendations to the Mayor, the Deputy Mayor for Health and Human Services, and the Deputy Mayor for Education regarding coordination, consolidation, streamlining, and alignment of the plans, policies, programs, and services, related to or responsible for improving outcomes for infants and children from birth to age five (5).

### Identifying Gaps and Opportunities

Identify gaps and opportunities for additional programs, initiatives, and services, to improve outcomes for infants and children from birth to age five (5).

# Remarks

---



**Wayne Turnage**  
Deputy Mayor for Health and Human Services



**Paul Kihn**  
Deputy Mayor for Education

# Member Introductions

---

- Name
- Role
- Organization
- What brings you to the work?

# Questions for Discussion

---

What comes to mind when you hear the phrase “thrive by five”?

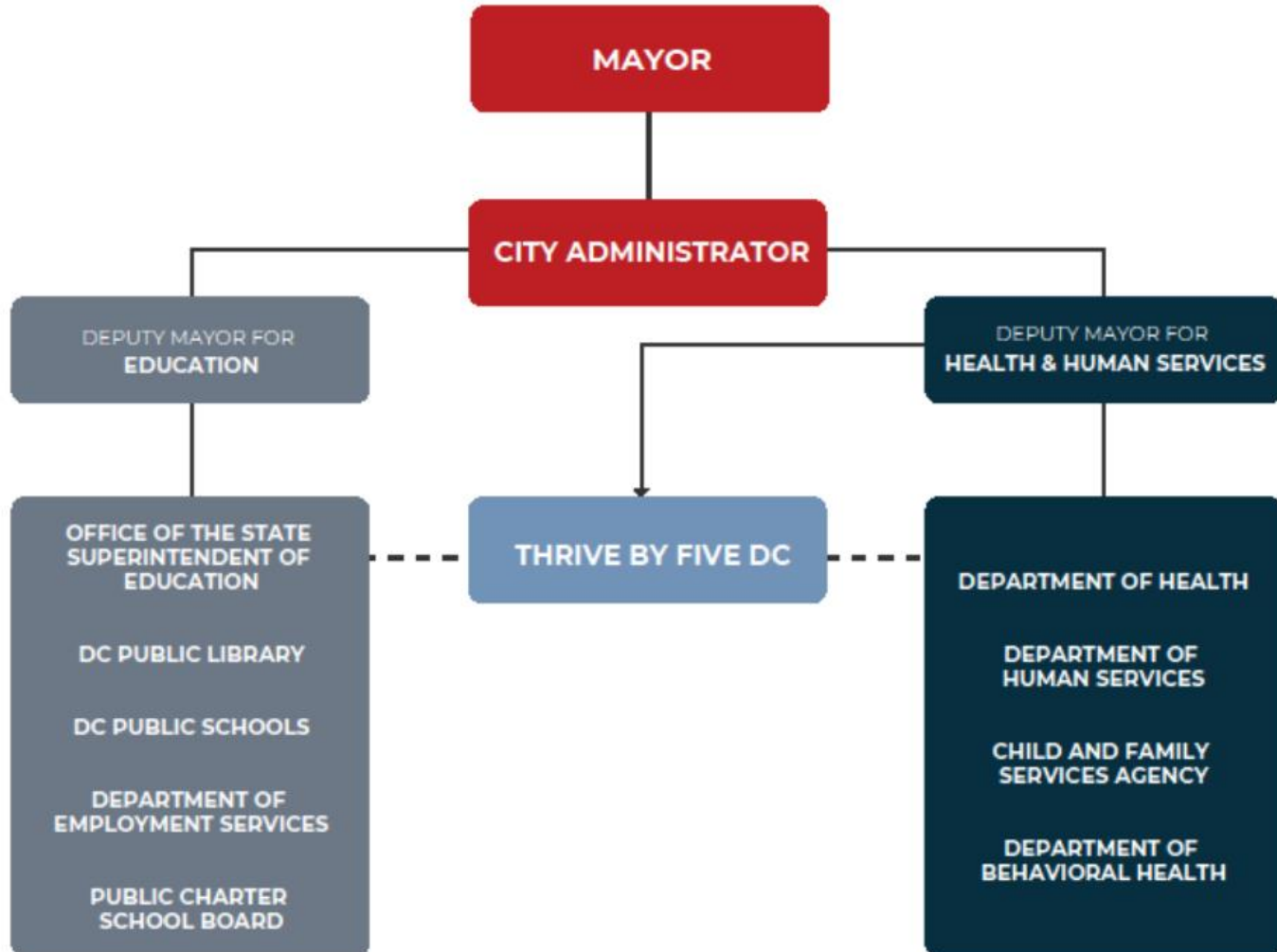
What expectations do you have of this phrase?





# Thrive by Five DC

As the District's first comprehensive health and early learning initiative, Thrive by Five DC is uniquely positioned within DC's governance structure:



# Thrive by Five Is...

---

Thrive by Five's scope is broad, but we've worked to identify these five main facets of our work:



Thrive by Five Coordinating Council



Early Development & Learning



Coordination of District Programs  
(serving mothers, children, and families)



Resource Website



Maternal & Infant Health Initiative



# Setting the Context: The DC Landscape

---

# Data Snapshot: The DC Landscape

---

Total Number of Children  
0 to 5 in DC

**54,099**

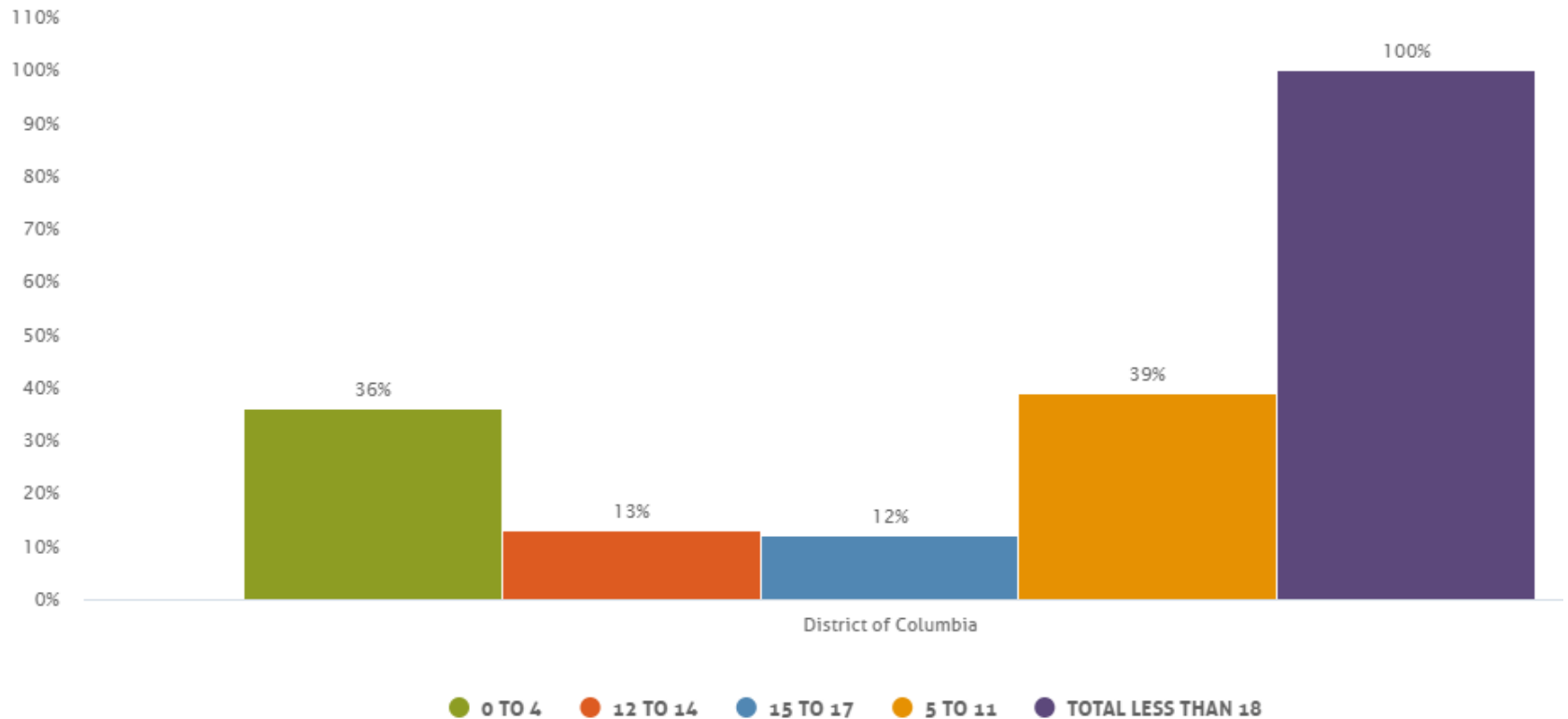
Total Number of Children  
under 18 in DC

**127,494**

# Data Snapshot: The DC Landscape

## Indicators by Age Group

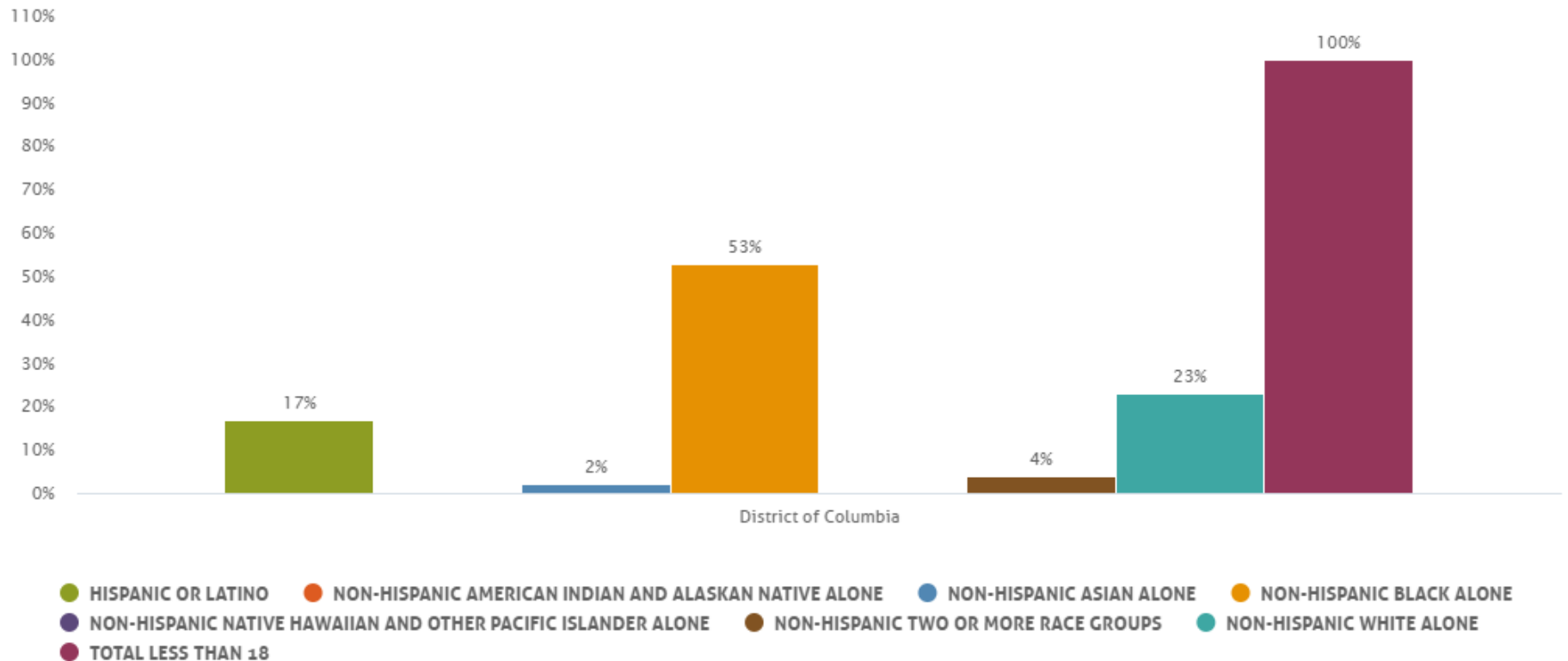
### Child Population by Age Group



# Data Snapshot: The DC Landscape

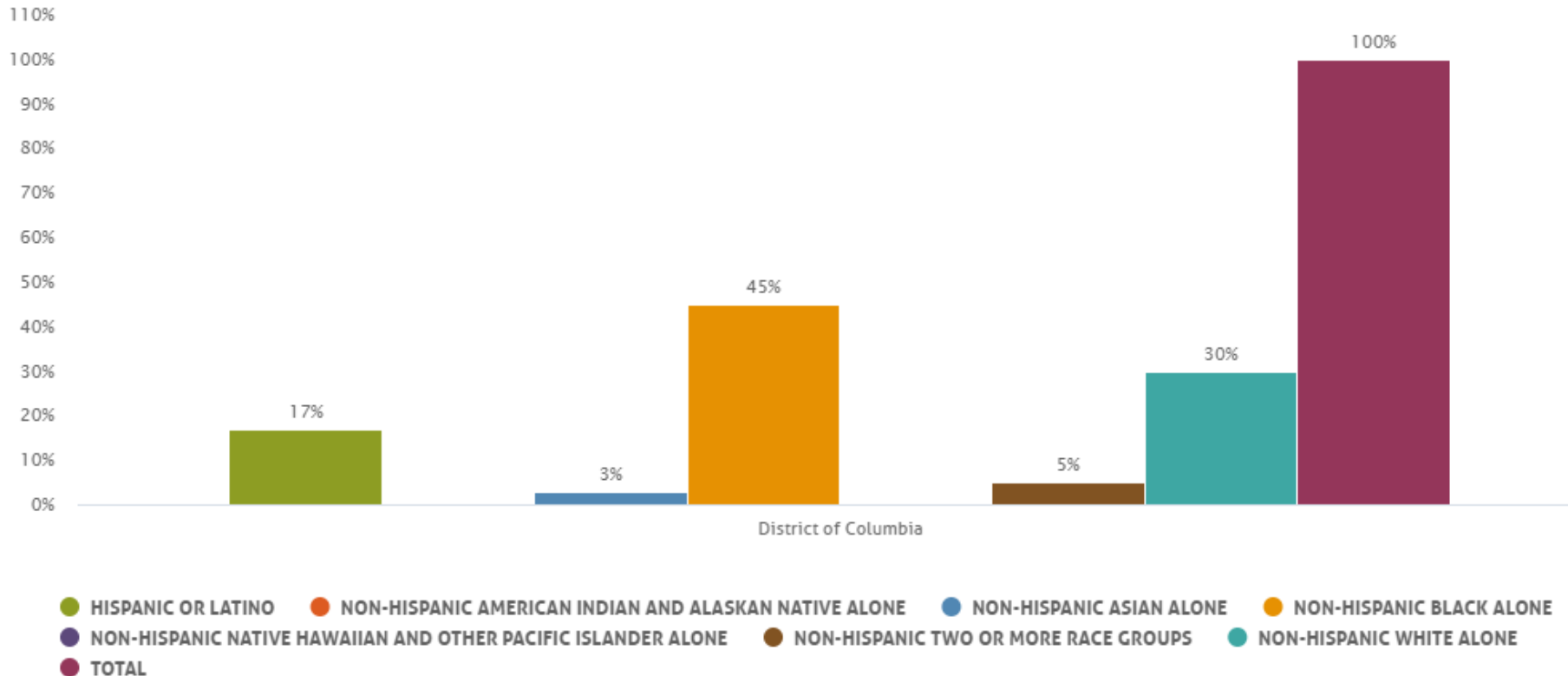
## Indicators by Race and Ethnicity

### Child Population by Race



# Data Snapshot: The DC Landscape

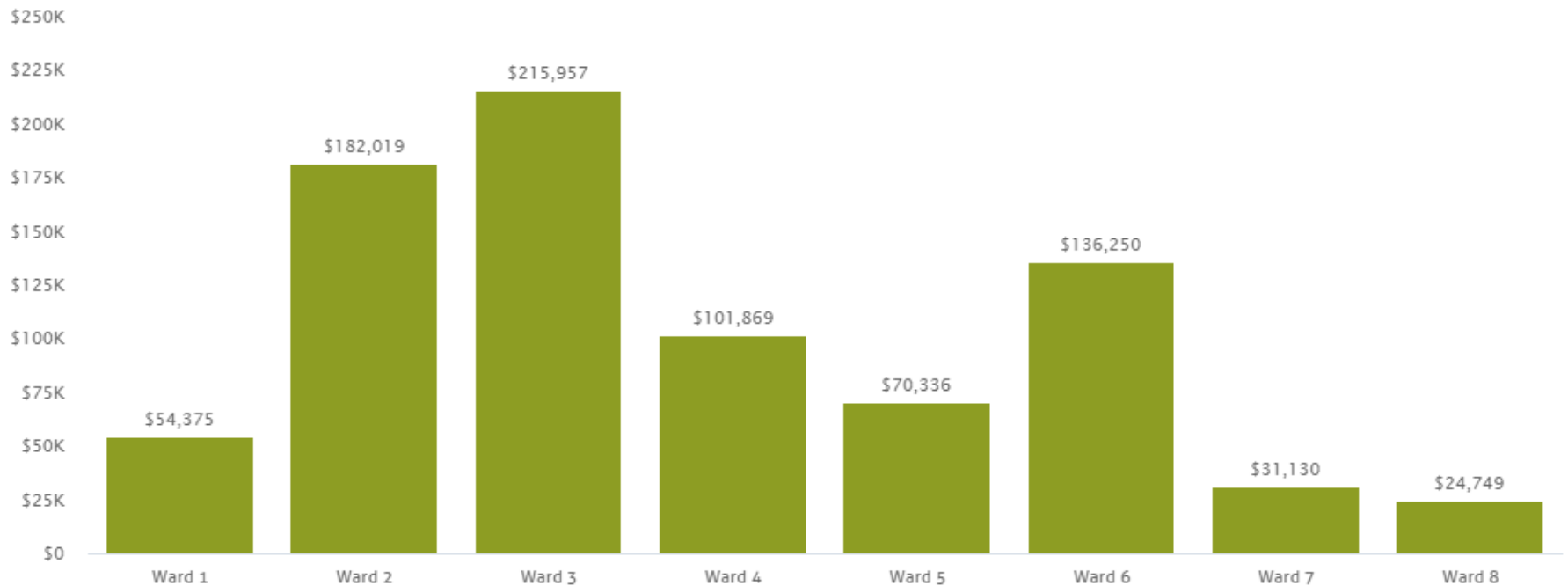
## Indicators by Race and Ethnicity Child Population by Race & Age Group



# Data Snapshot: The DC Landscape

## Employment and Income

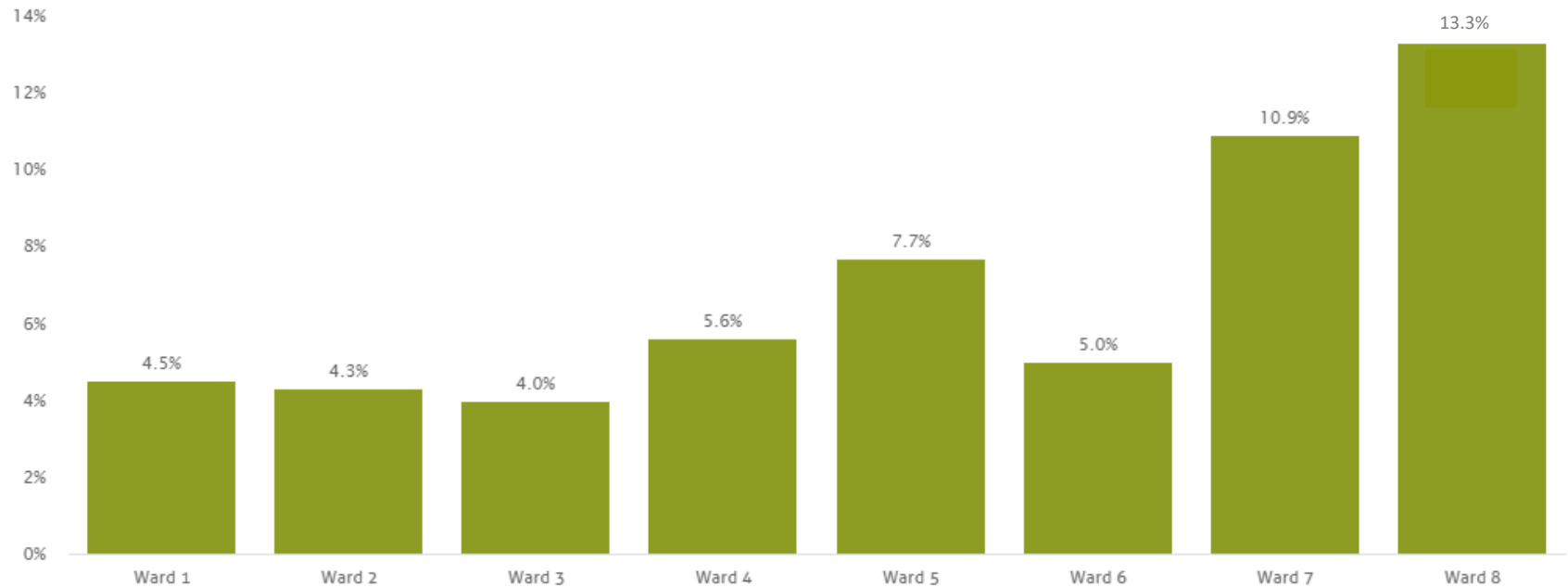
### Median Family Income with Children by Ward





# Data Snapshot: The DC Landscape

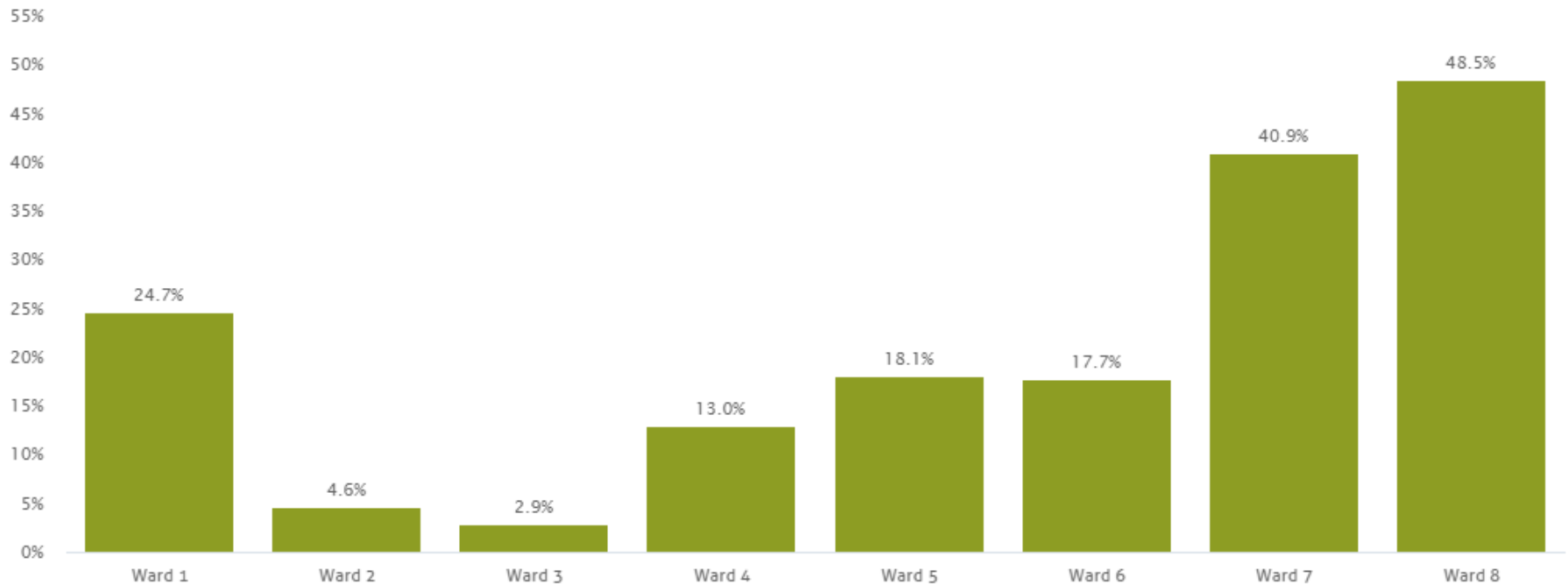
## Employment and Income Unemployment by Ward



# Data Snapshot: The DC Landscape

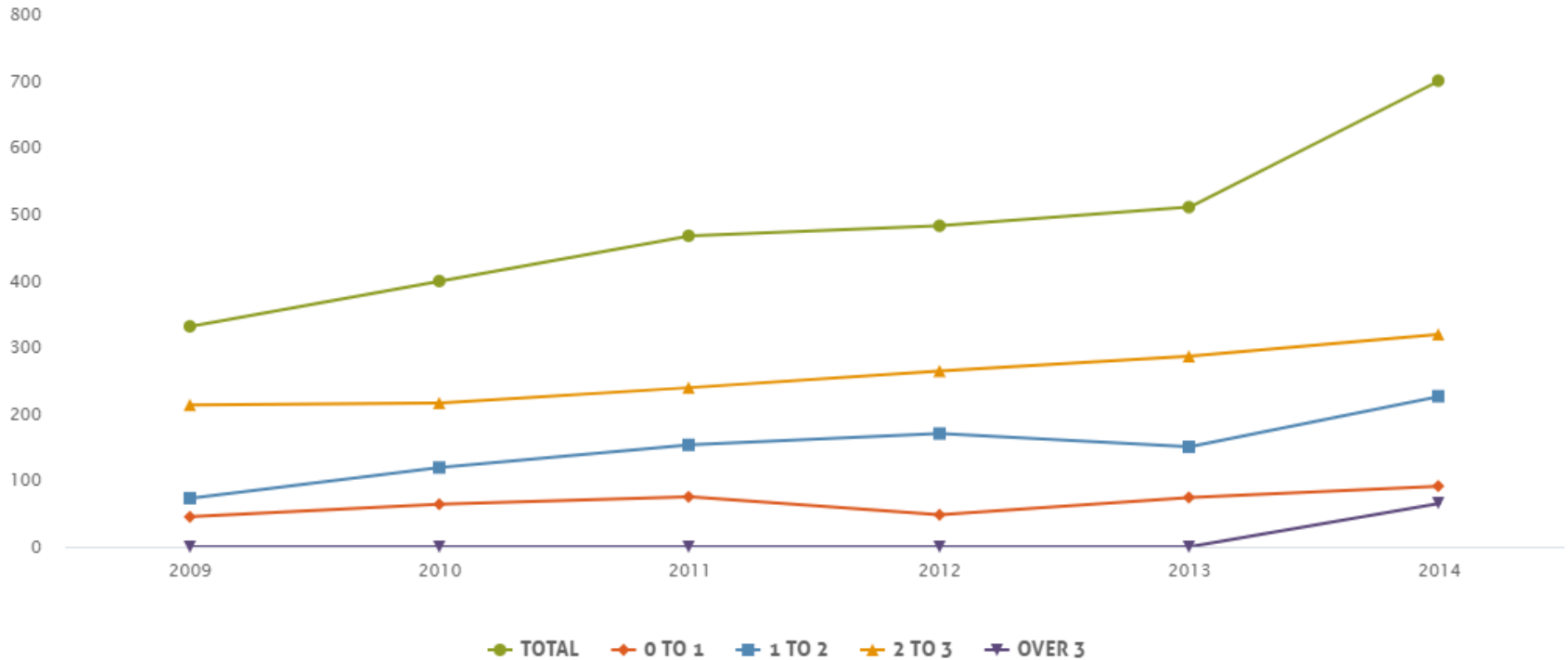
## Poverty

### Child Poverty by Ward



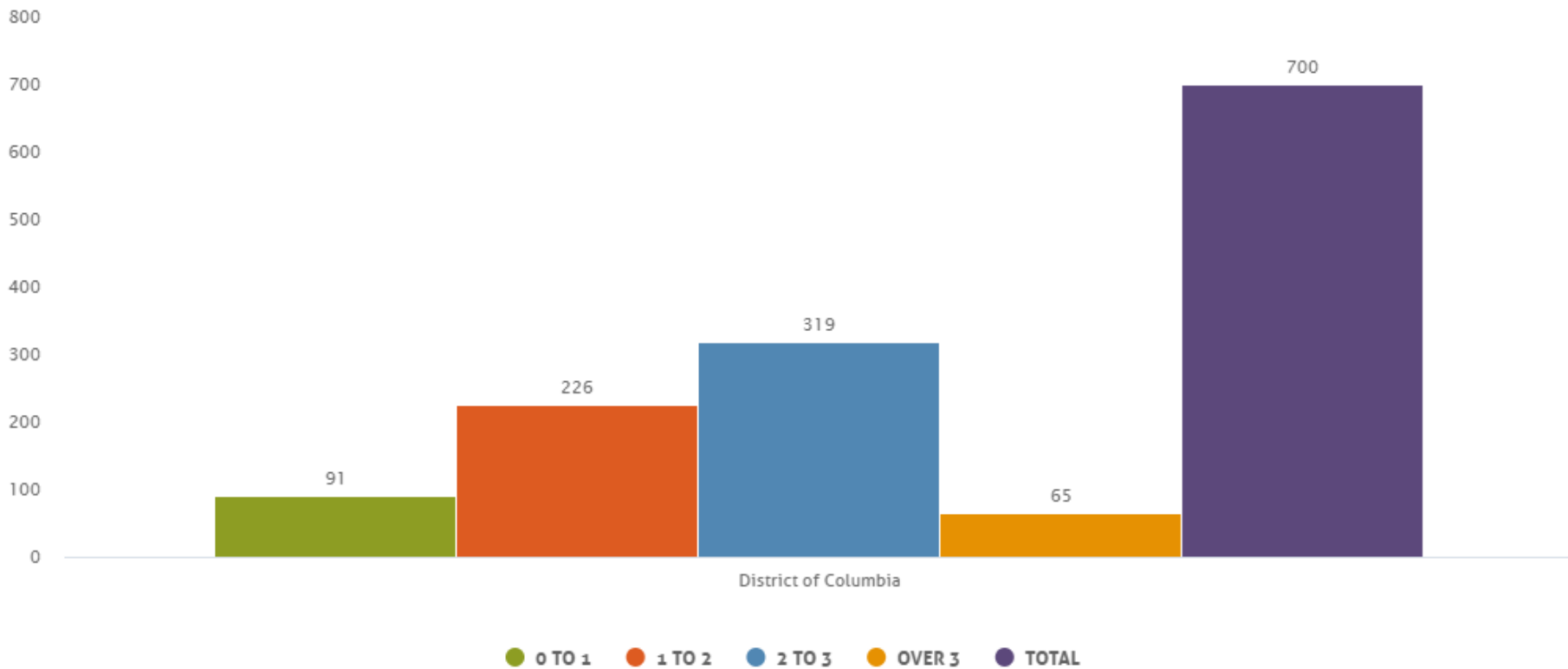
# Data Snapshot: The DC Landscape

## Children with Disabilities Early Intervention Enrollment



# Data Snapshot: The DC Landscape

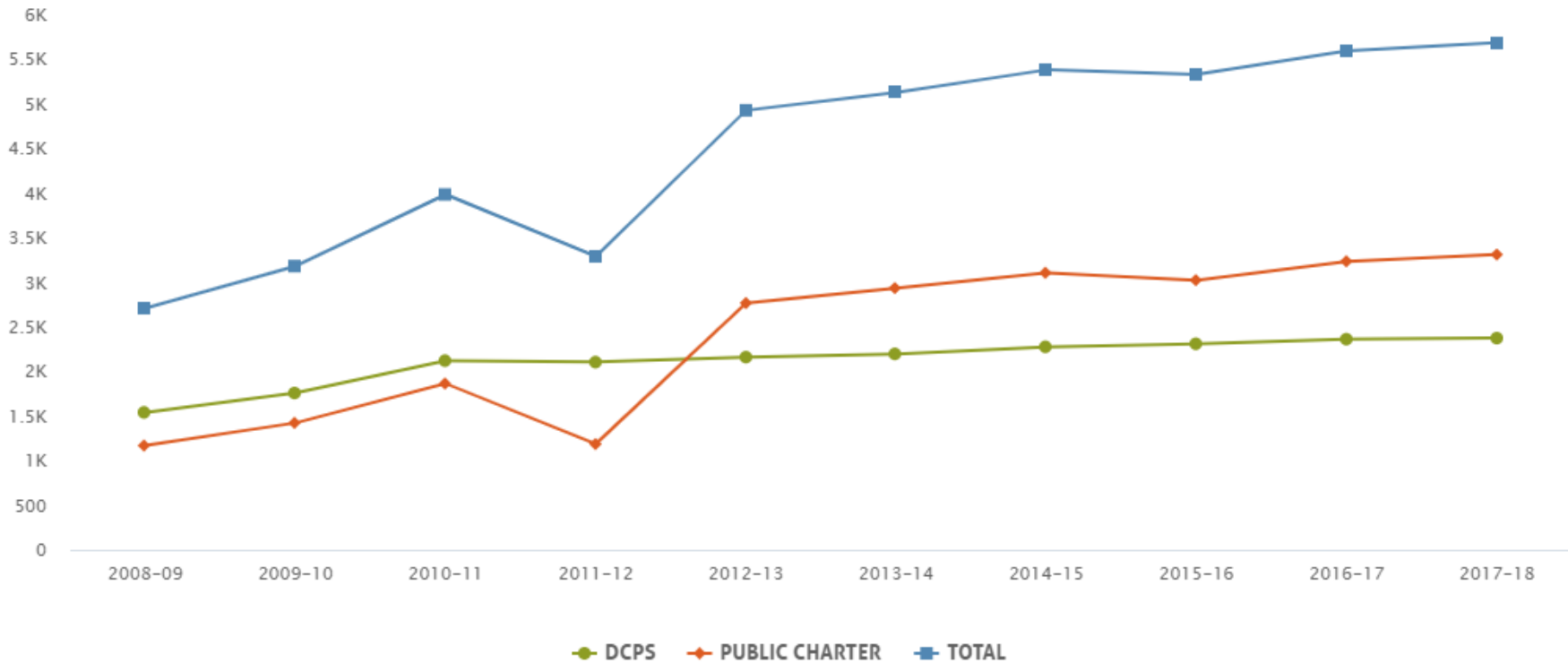
## Children with Disabilities Early Intervention Enrollment



# Data Snapshot: The DC Landscape

## Early Childhood

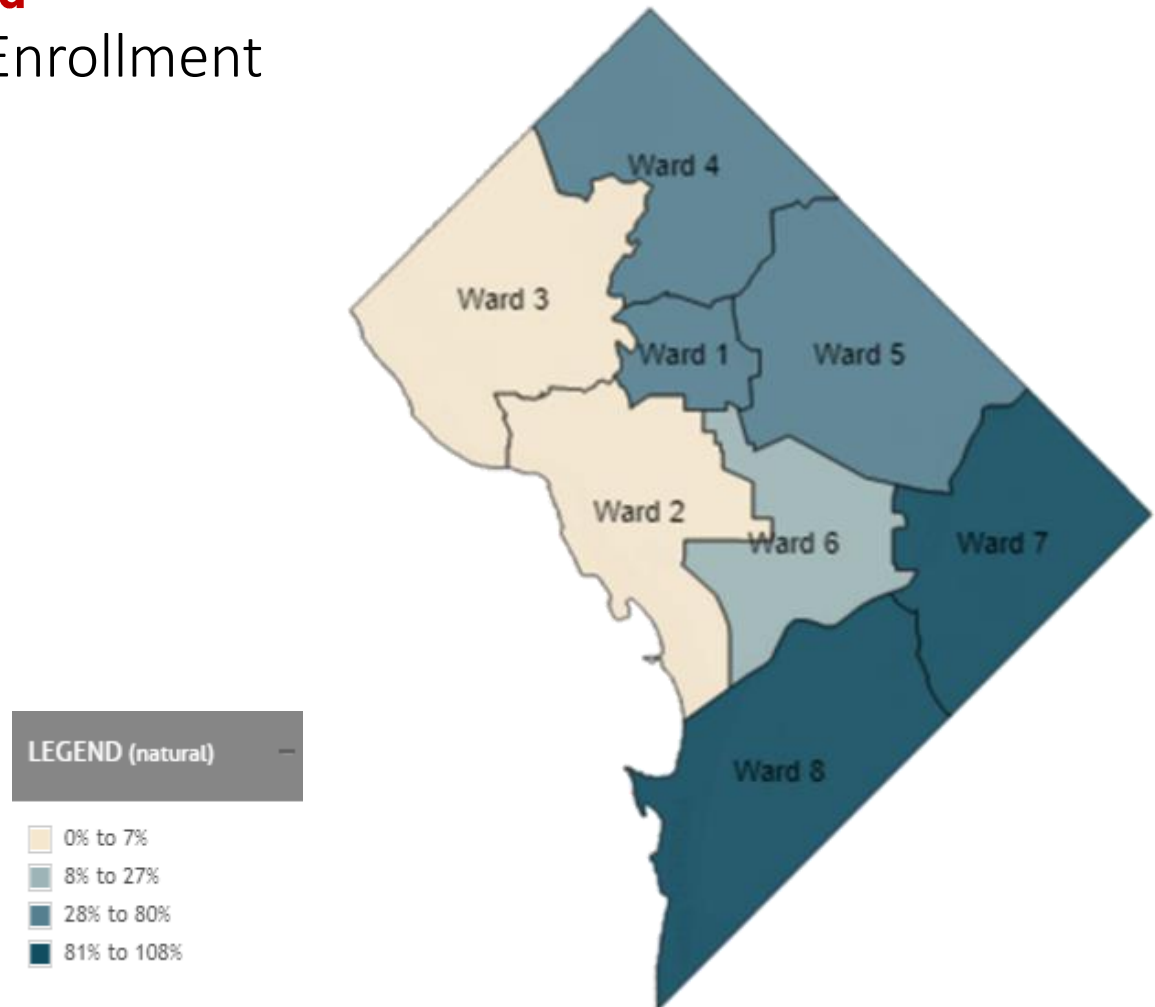
### Public Preschool and Pre-K Enrollment



# Data Snapshot: The DC Landscape

## Early Childhood

### Subsidized Child Care Enrollment by Ward



# Additional Data Points

---

## Public Assistance

Children in Families Receiving  
Public Assistance

**46,000**

## Public Assistance

Children Applied & Eligible for  
Medicaid/CHIP

**78,985**

## Housing

Children in Low-Income  
Households with High Housing  
Cost Burden

**38,000**

# Data Snapshot: Perinatal Health

## PERINATAL

DISTRICT OF COLUMBIA DEPARTMENT OF HEALTH  
Perinatal Health and  
Infant Mortality Report

MAY 2018



### Human-Centered Solutions to Improve Reproductive and Maternal Health Outcomes in Washington, D.C.

ROBYN RUSSELL  
CAROLYN RODEHAU & PATRICIA QUINN

This report shines a light on unmet reproductive and maternal health needs of low-income women living in the District of Columbia, and provides policymakers and providers with a Roadmap for Action containing a clear set of 12 actionable and costed initiatives that can be pursued to improve the health and well-being of women and their families.

The best way to orient ourselves to the District perinatal health landscape is through these two reports—

- DC Health’s Perinatal Health and Infant Mortality Report (2018), and
- DC Primary Care Association’s Human-Centered Approach to Improve Reproductive and Maternal Health Outcomes in Washington, D.C.

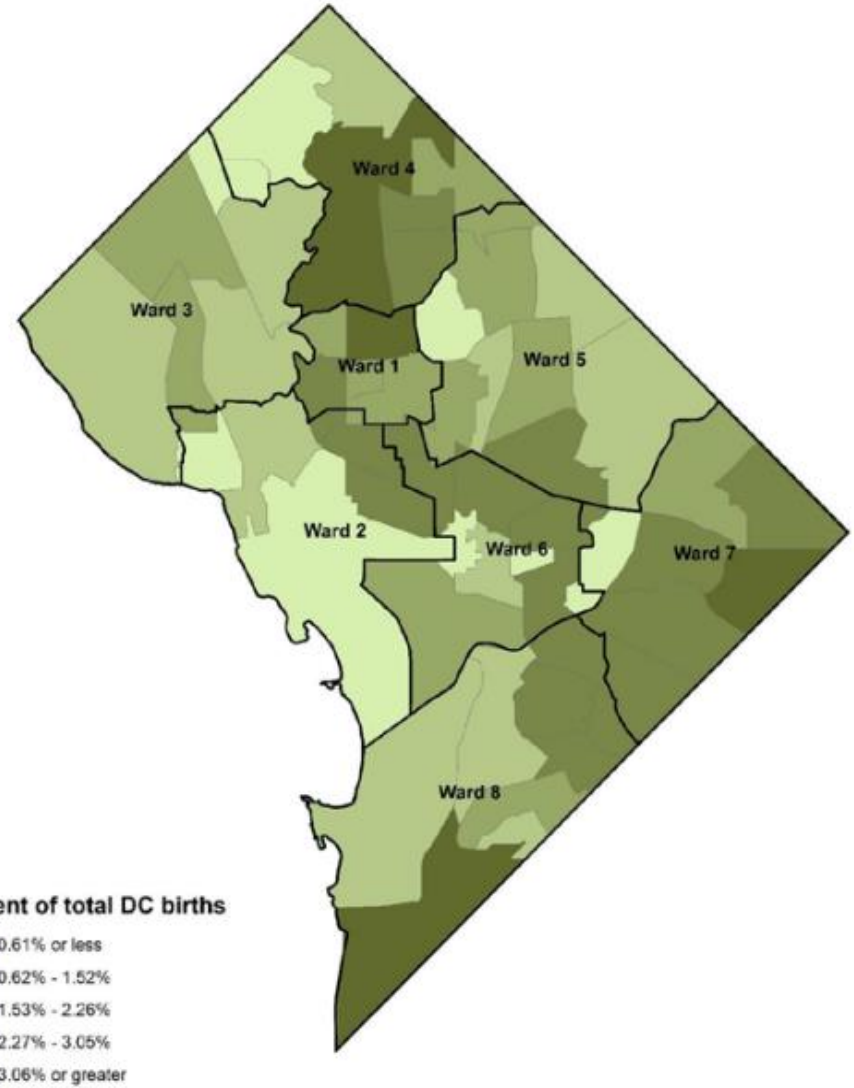
**Perinatal health: the health and wellbeing of mothers and babies before, during, and after child birth.**

Additionally, there are other reports, such as the “[Strong Start for Mothers and Newborns](#)” and others, which provide context.



# Data Snapshot: The DC Landscape

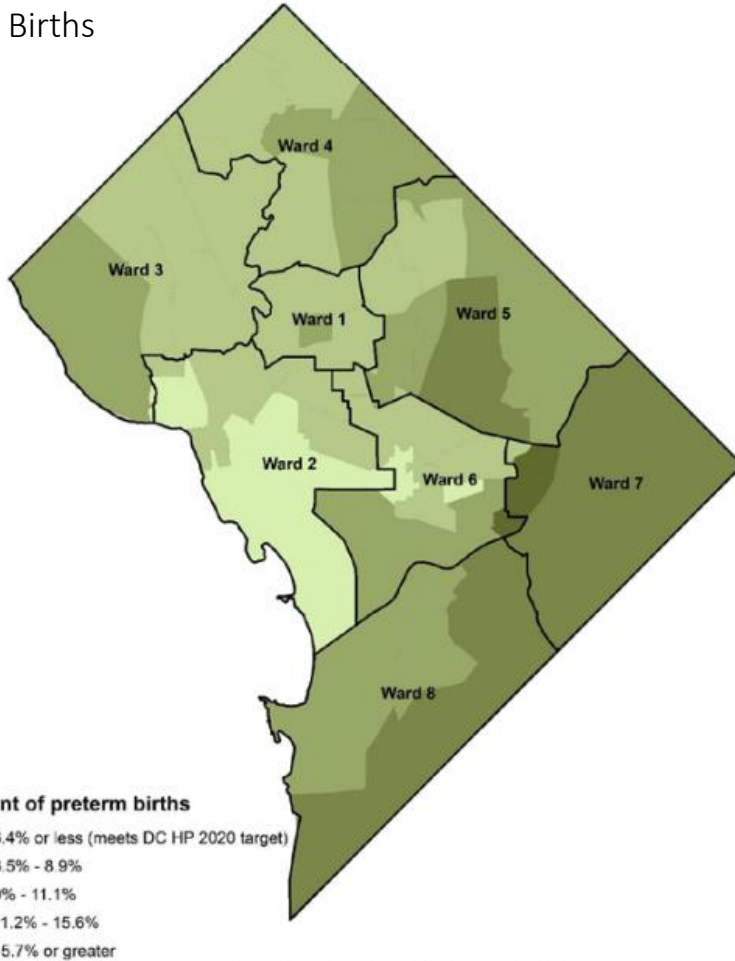
## Total DC Births



Neighborhood clusters were created within the Center for Policy, Planning and Evaluation by spatially joining contiguous census tracts.  
Data Source: DC Birth Data, Vital Records Division, Center for Policy, Planning and Evaluation, D.C. Department of Health

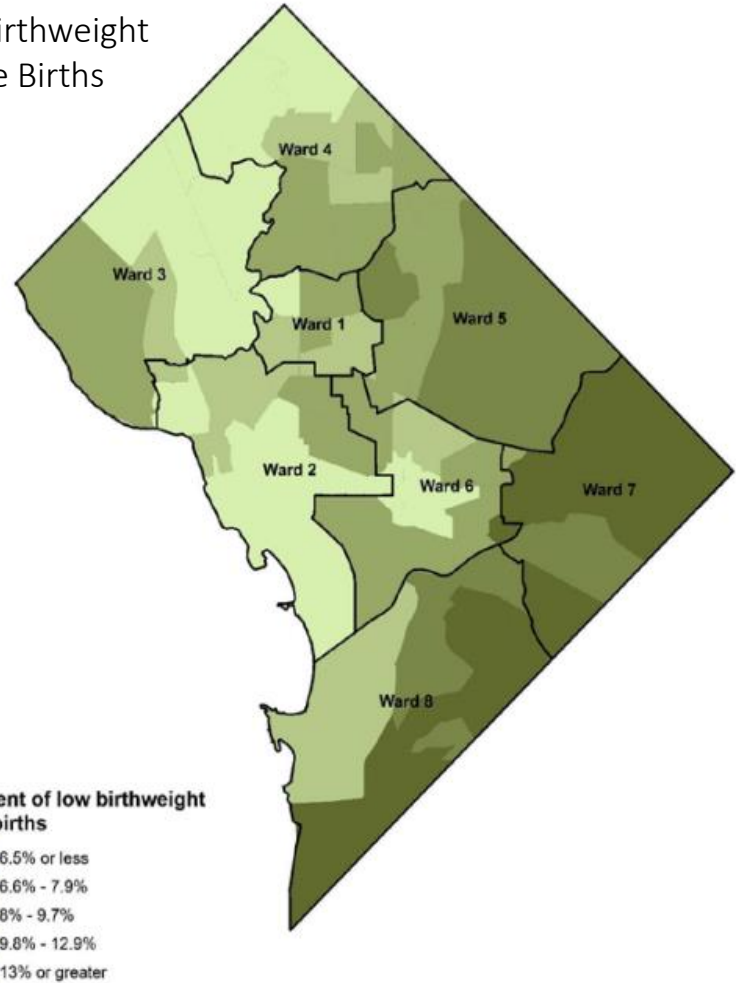
# Data Snapshot: The DC Landscape

Preterm Births



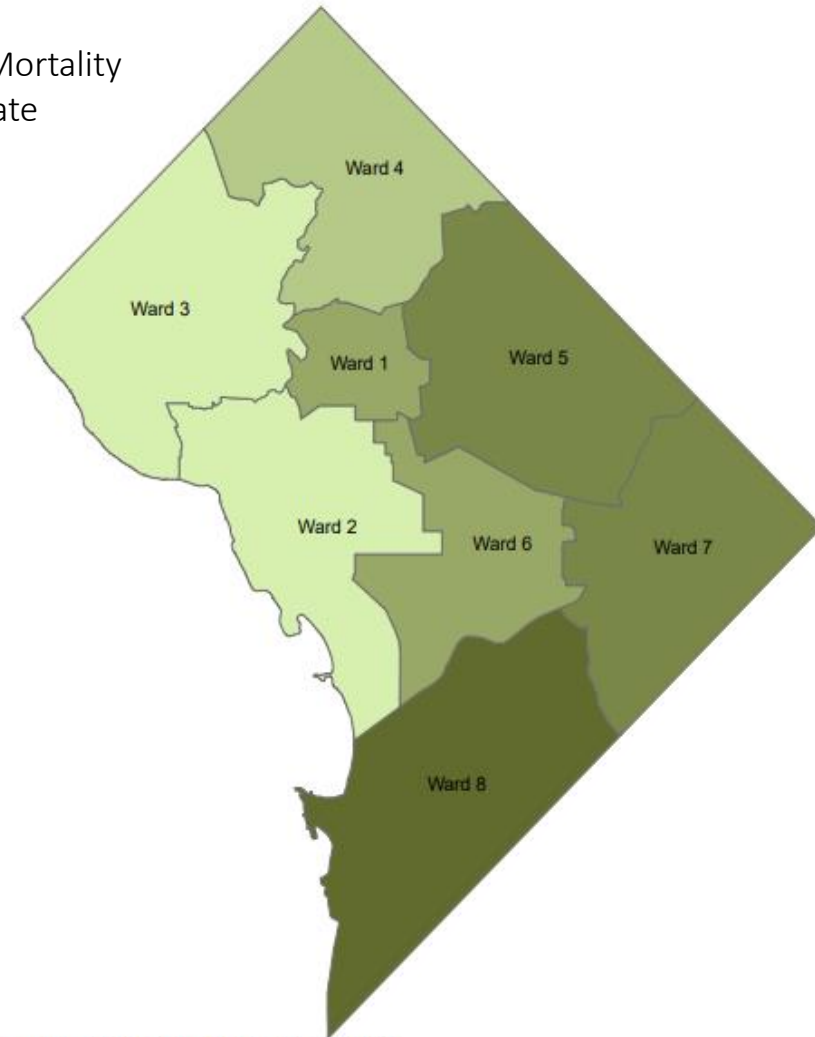
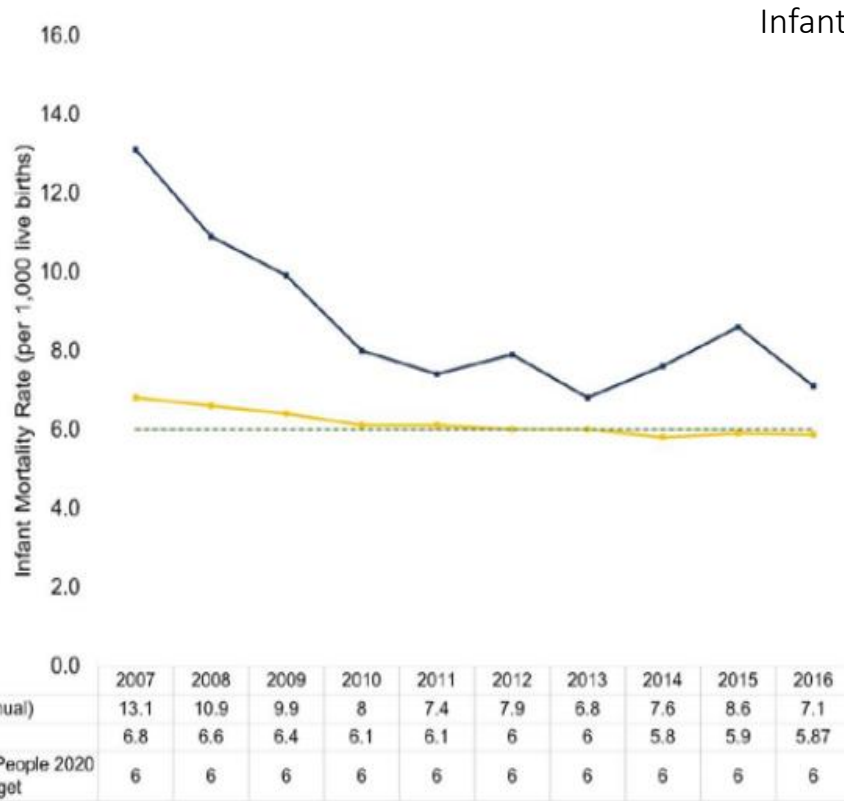
Neighborhood clusters were created within the Center for Policy, Planning and Evaluation by spatially joining contiguous census tracts.  
 Data Source: DC Birth Data, Vital Records Division, Center for Policy, Planning and Evaluation, D.C. Department of Health

Low Birthweight Live Births

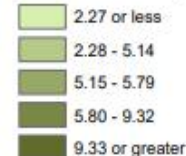


Neighborhood clusters were created within the Center for Policy, Planning and Evaluation by spatially joining contiguous census tracts.  
 Data Source: DC Birth Data, Vital Records Division, Center for Policy, Planning and Evaluation, D.C. Department of Health

# Data Snapshot: The DC Landscape



Infant Mortality Rate (per 1,000 live births)



During the five year time period 2012-2016, Wards 5, 7, and 8 had the highest infant mortality rates of 9.2, 9.32 and 14.6 per 1,000 live births respectively. During 2015-2016, these three Wards accounted for 44% of all live births yet 64% of all infant deaths.

# Reflection: The DC Landscape

---

What are your thoughts?

What does the data say?

What stands out?

# Deeper Context: Framing Our Current Actions

---

# Context Setting



## DC Health Strategy to Improve Perinatal Health Outcomes

In 2018, DC Health released its “Perinatal Health and Infant Mortality Report. This report provided a comprehensive approach to improve the health and well-being of District moms and babies before, during and after childbirth. It includes years of local data regarding births of District residents, health characteristics of women before and during pregnancy, and birth outcomes of mothers who had live births in DC.

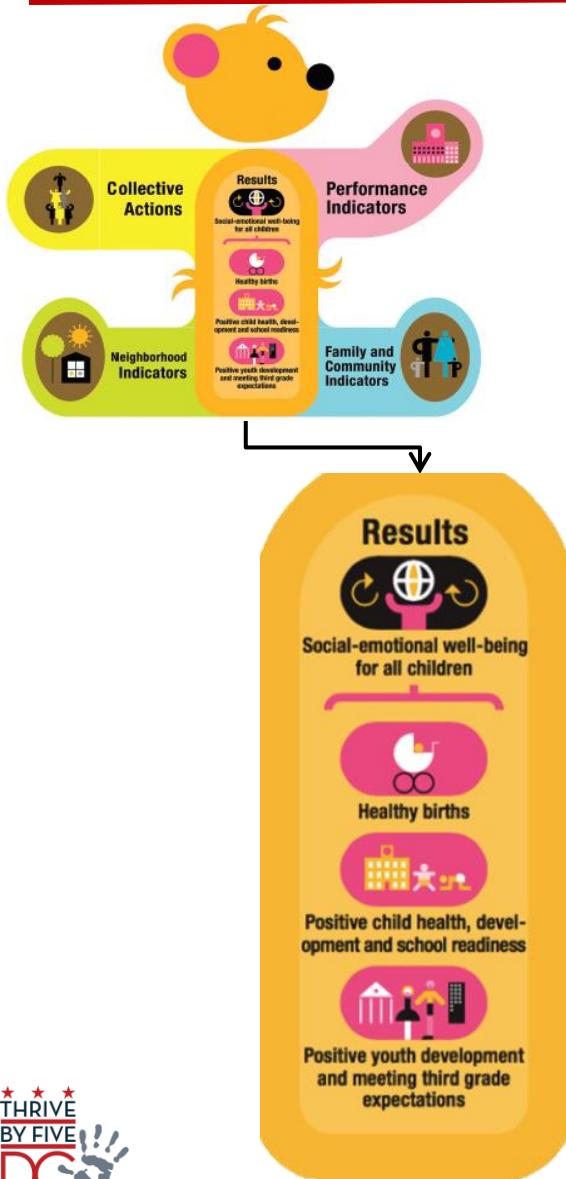
In addition to providing those data points, the report also introduced the District’s perinatal health framework. The framework has seven core priorities to drive programmatic efforts to improve perinatal health outcomes in the District:

1. Every teenage girl and woman in DC is in control of her reproductive health.
2. Every pregnant woman receives patient-centered, high quality prenatal care beginning in the 1<sup>st</sup> trimester.
3. Every healthcare provider has the tools and resources they need to provide quality care and manage complex social needs of women and infants.
4. Every healthcare facility providing maternal and infant care has the tools and resources to practice evidence based healthcare.
5. Every newborn receives high-quality neonatal care in the hospital and out-patient setting.
6. Every parent has the life skills and resources needed to nurture and provide for their family.
7. Every infant, mom, and dad has a safe and healthy environment to thrive and receive the support they need to promote early childhood development.

# Context Setting

## District of Columbia's Early Childhood System Approach to Child Health, Development, Education and Well-Being

Developed by Office of the State Superintendent of Education, DC's early childhood system approach aims to improve outcomes for children beginning at birth and throughout their childhood by addressing racial and social inequities in the District of Columbia.

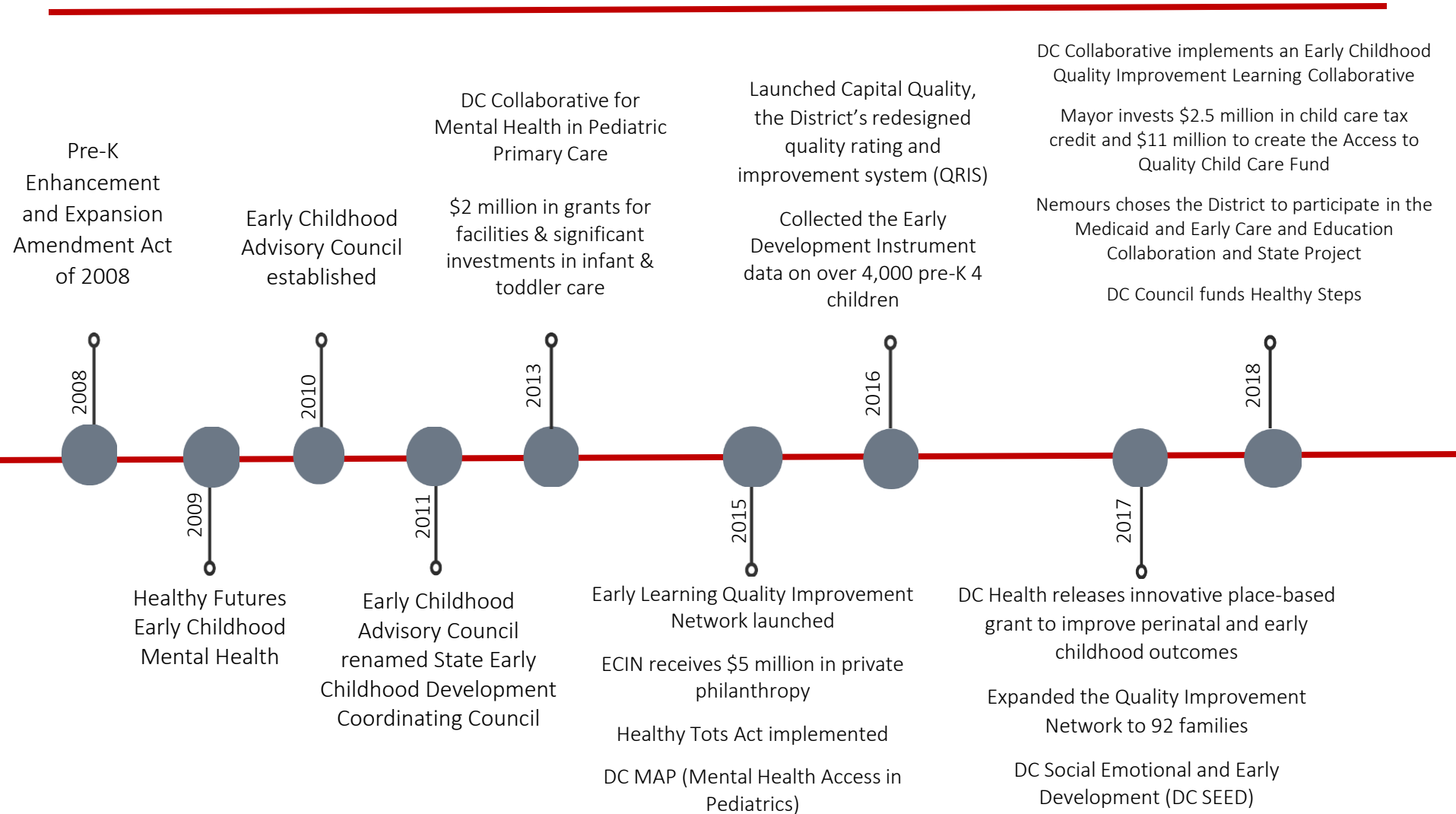


With shared indicators (Performance Indicators, Neighborhood Indicators, Family and Community Indicators) plus collective actions, our overarching system result is the social-emotional well-being for all children.

- Our first system result is healthy birth as measured by pre-term deliveries, low birth weight and infant mortality.
- Our second system result is school readiness as measured by the Early Development Instrument conducted by pre-K 4 teachers.
- Finally, we use PARCC to measure the percent of all third grade students meeting grade-level expectations.

# Early Care & Health Investments

From 2008 to 2018





# 2019 Early Care & Health Investments

---

## Investments

- The District of Columbia awarded a \$10.6 million Preschool Development Grant, Birth to Five (PDG B-5) to conduct a comprehensive needs assessment and create a comprehensive strategic plan to maximize parent choice.
- The District awarded \$1.7 million expansion of the Early Head Start – Child Care Partnership grant.
- Children’s National awarded a Pritzker Prenatal-to-Age Three State Planning Grant on behalf of the District of Columbia.
- DC Families First Success Centers Investment
- DC Council expands Healthy Steps.
- DC Council expands Healthy Futures, mental health consultation.

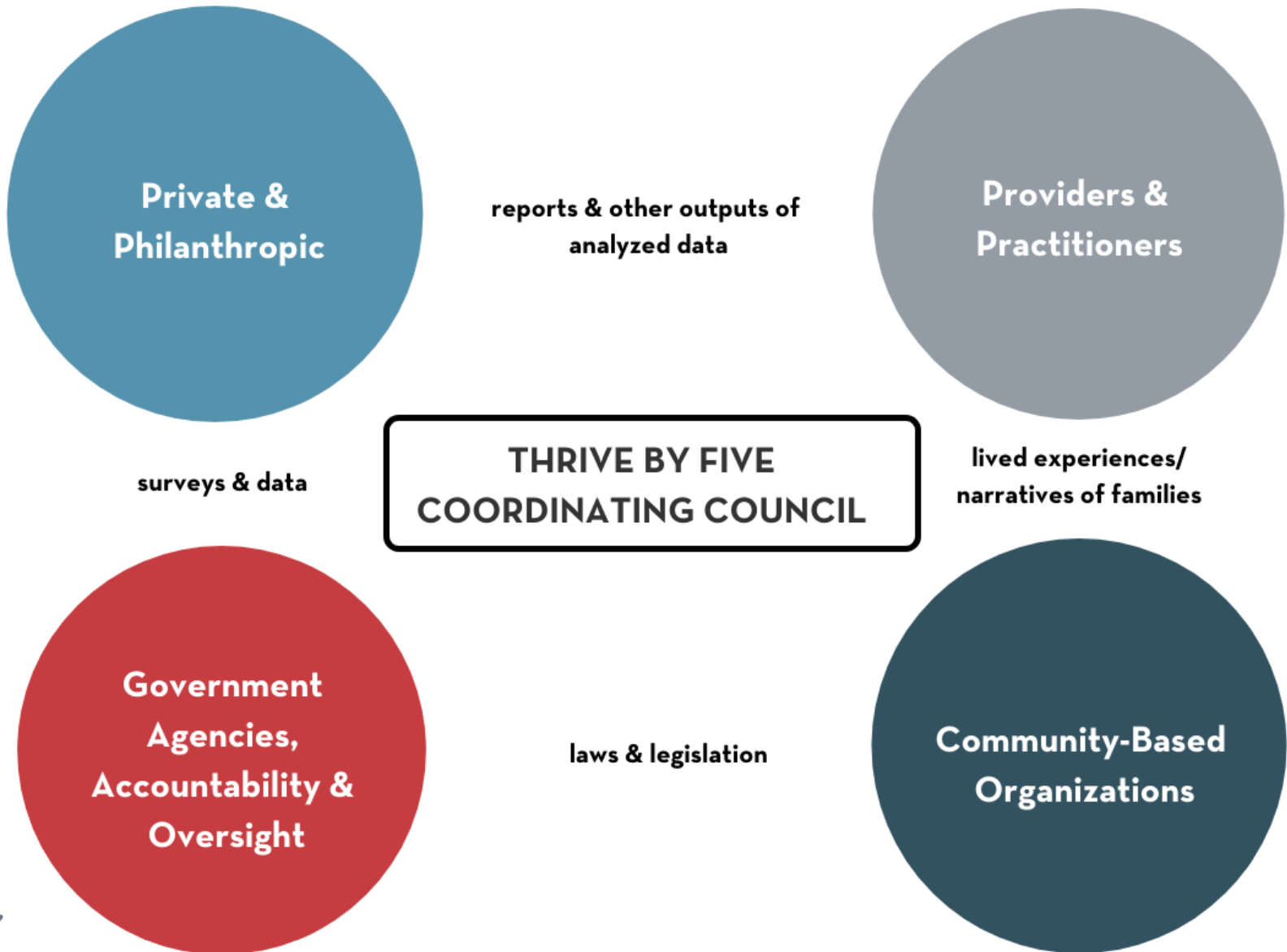
## Innovation/System Redesigns

- The District is selected to participate in national ZERO to THREE Infant and Early Childhood Mental Health Policy Convening and Technical Assistance opportunity to advance infant and early childhood mental health financing and policy.
- DHCF issued transmittal to pediatric providers to provide guidance on behavioral health screenings in pediatric primary care, including the addition of a new maternal depression screening code to be used during the well-child visit.

**Thrive by Five DC &  
the Thrive by Five Coordinating Council established.**

# Landscape Analysis: Thrive by Five's Place

---



# Decision-Making Tables

---

A short list of decision-making tables throughout the District focused on improving outcomes for moms, babies, and children...

**Government  
Agencies,  
Accountability &  
Oversight**

- District of Columbia Child Fatality Review Committee
- District of Columbia Developmental Disabilities State Planning Council
- Mayor's Advisory Committee on Child Abuse and Neglect
- District of Columbia Maternal Mortality Review Committee
- District of Columbia Infant Mortality Review Committee
- State Advisory Panel on Special Education
- Statewide Health Coordinating Council
- State Early Childhood Development Coordinating Council
- Quality Improvement Network Interagency Steering Committee

**Private &  
Philanthropic**

- Early Care and Education Funders Consortium (Locally-focused)
- Early Childhood Funders Collaborative (Nationally-focused)
- Washington Regional Association of Grantmakers
- *Foundations, Think Tanks, Non-Profit Organizations*

# Thrive by Five Coordinating Council

---

The purpose of the Mayor's Thrive by Five Coordinating Council is to drive progress on initiatives that improve outcomes for mothers and infants and children from birth to age five (5) in the District.

# Thrive by Five Coordinating Council

---

## The Council shall:

### Track and report

Track and report on the progress and outcomes of District and community programs and initiatives focused on improving the outcomes of maternal and infant (perinatal) health and healthy child development from birth to age five (5).

### Programmatic and Policy Recommendations

Make recommendations to the Mayor, the Deputy Mayor for Health and Human Services, and the Deputy Mayor for Education regarding programs, policies, and initiatives to connect families and individuals to resources to support maternal and child (perinatal) health, behavioral health, and early education.

### Coordination and Streamlining

Make recommendations to the Mayor, the Deputy Mayor for Health and Human Services, and the Deputy Mayor for Education regarding coordination, consolidation, streamlining, and alignment of the plans, policies, programs, and services, related to or responsible for improving outcomes for infants and children from birth to age five (5).

### Identifying Gaps and Opportunities

Identify gaps and opportunities for additional programs, initiatives, and services, to improve outcomes for infants and children from birth to age five (5).

# Member Priorities & Goals

---

What are your priorities or priority areas?

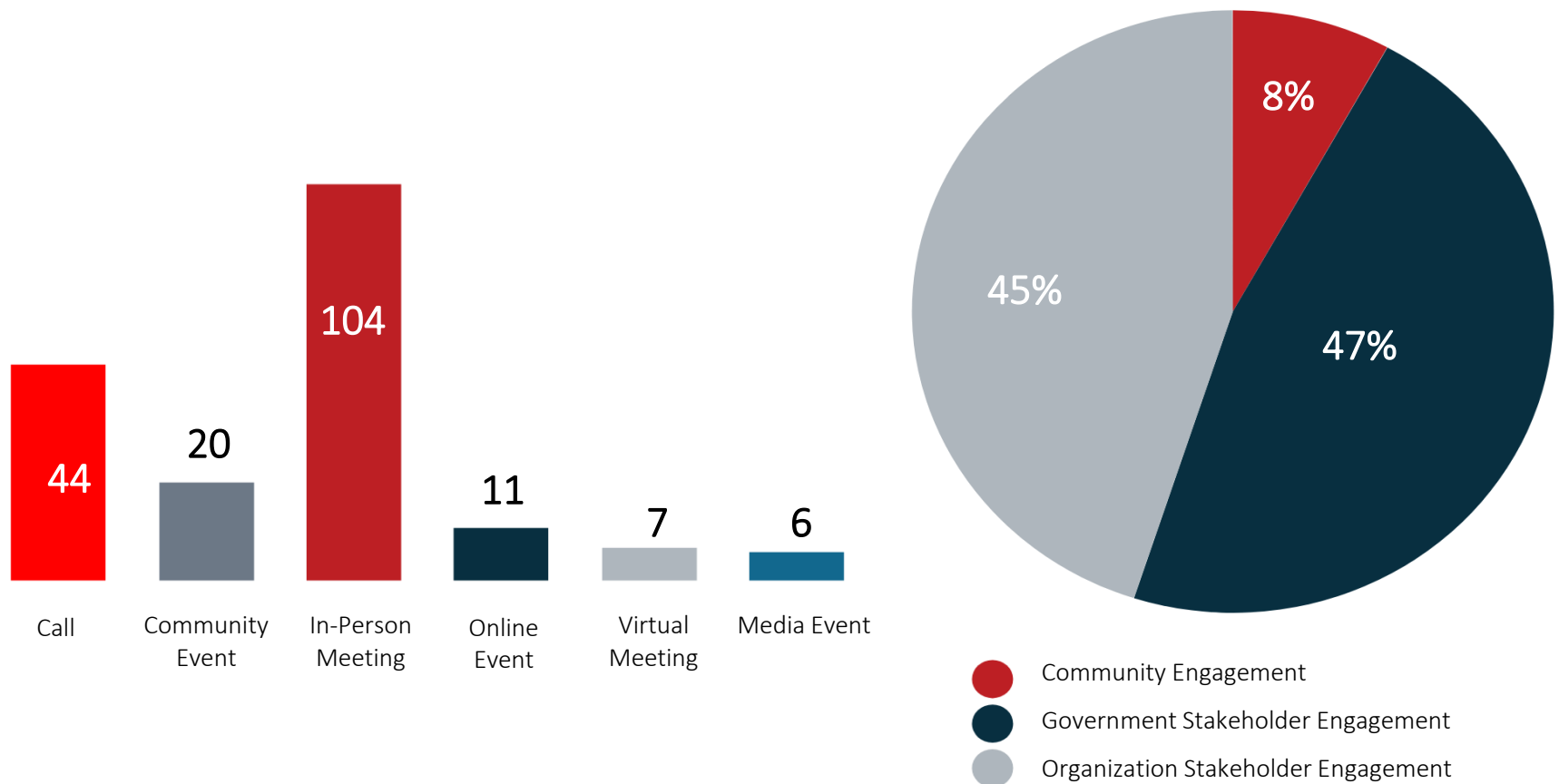
What do you believe should be the mission or goal of this work?

What strategic priorities should we focus on?

# Thrive by Five's Outreach & Engagement

Since May 1, 2019, Thrive by Five has attended, participated in, and/or hosted over 190 in-person meetings, virtual meetings, media events, and community events.

Thrive by Five impacted/touched 5600+ people in the following engagement modes:



# Thrive by Five Working Group

---

Thrive by Five DC's work is developed in partnership with all stakeholders implementing and investing in this space. In addition to providing thought-partnership, the Thrive by Five working group helps to ensure that the work of the office is executed effectively.

The following organizations are represented in the  
Thrive by Five working group:

- AppleTree Early Learning Initiatives
- Bainum Foundation
- Bright Beginnings
- Capital Area Food Bank
- Children's Law Center
- Community of Hope
- DC Action for Children
- DC Appleseed Center for Law & Justice
- DC Health Early Childhood Health Division, Community Health Administration
- DCPS Early Childhood Division
- DCPS Early Stages
- EduCare DC
- Georgetown University, Early Childhood Innovation Network
- Loving Care Child Development Center
- Mamatoto Village
- Martha's Table
- Mary's Center
- OSSE Division of Early Learning
- Petit Scholars
- Raise DC
- Spanish Education & Development Center
- United Planning Organization
- Washington Area Women's Foundation



# Identified Strategic Items

---

With the support from the Thrive by Five Working Group, we've identified two strategic items that will help us fulfill our duties, as defined by mayoral order:

## Roadmap

District families, education and healthcare professionals, and service providers should know where to go, internal and external to government, when seeking information about health and education in the maternal health and 0-5 space.

## Fiscal Mapping

In order to track and report outcomes of District and community programs, we must first determine how money flows and is being utilized to improve perinatal health and healthy child development.

# Subcommittees

---

## Potential subcommittees:

- Strategic Planning & Initiatives Committee
- Perinatal Health Committee
- Child Health & Development Committee
- Early Learning & Care Committee
- Community Engagement Committee

# Future Meeting Dates

---

**Thrive by Five  
Coordinating Council  
meeting dates fall on  
Wednesdays.**

**Date: January 22, 2020**

Time: 3-5 pm

Location: TBD

**Date: March 25, 2020**

Time: 3-5 pm

Location: TBD

**Date: May 27, 2020**

Time: 3-5 pm

Location: TBD

**Date: July 29, 2020**

Time: 3-5 pm

Location: TBD

**Date: September 9, 2020**

Time: 3-5 pm

Location: TBD

# Thank you!

Website: [thrivebyfive.dc.gov](http://thrivebyfive.dc.gov)

Email address: [thrivebyfive@dc.gov](mailto:thrivebyfive@dc.gov)

Twitter/Instagram: [@thrivebyfiveDC](https://www.instagram.com/thrivebyfiveDC)